

| | |
|--------------------------|---------------------------|
| Instruction Sheet | Learning Guide #21 |
|--------------------------|---------------------------|

This learning guide is developed to provide you the necessary information regarding the following content coverage and topics –

- Template tracing on a given card board
- Cutting the traced pattern on a cardboard
- Copying reference and specification on to the pattern

This guide will also assist you to attain the learning outcome stated in the cover page. Specifically, upon completion of this Learning Guide, you will be able to –

- Trace the given template on a card board
- Cut the traced pattern on a cardboard
- Copy reference and specification on to the pattern

Learning Instructions:

1. Read the specific objectives of this Learning Guide.
2. Follow all the instructions described.
3. Read the information written in the “Information Sheets 1”. Try to understand what are being discussed. Ask your teacher for assistance if you have hard time understanding them.
4. Accomplish the “Self-check 1” on page
5. Ask from your teacher the key to correction (key answers) or you can request your teacher to correct your work. (You will get the key answer only after you finished answering the Self-check 1).

| | |
|-----------------------------|---------------------------------------------------|
| TTLM: IND LGP2 TTLM 0919 V1 | TVET Program: Leather Garment Production Level II |
| Revision: 0 | Author: FTVETA |

6. If you earned a satisfactory evaluation proceed to “Information Sheet 2”. However, if your rating is unsatisfactory, see your teacher for further instructions. 0
7. Submit your accomplished Self-check. This will form part of your training portfolio.
8. Accomplish the “Self-check 2” on page.
9. Ask your teacher the key to correction (key answers) or you can request your teacher to correct your work. (You will get the key answer only after you finished answering the Self-check 2).
10. Read the “Operation Sheet 1” and try to understand the procedures discussed.
11. Read the “Operation Sheet 2” and try to understand the procedures discussed
12. Do the “LAP test” on page_____ (if you are ready). Request your teacher to evaluate your performance and outputs. Your teacher will give you feedback and the evaluation will be either satisfactory or unsatisfactory. If unsatisfactory, your teacher shall advice you on additional work. But if satisfactory you can proceed to Learning Guide #3.

| | |
|----------------------------|-----------------------------------------------|
| Information Sheet 1 | Template tracing on a given card board |
|----------------------------|-----------------------------------------------|

Pattern Tool Box: Tracing Wheel

Tracing wheels are usually a blunt or serrated edge wheel on a wooden or plastic handle. The blunt ones can be used for tracing with carbon paper to mark off one pattern onto another paper or piece of cardboard. Tracing wheels are the most

commonly used which pierce a line of small holes through from one layer of paper or cardboard onto the layer underneath.



Fig. 1: Tracing wheel

1.1 Cuffpattern

A cuff is an extra layer of fabric at the lower edge of the sleeve of a garment covering the arms also at the end of the leg of a pair of trousers. Turning back the material may make cuffs, or a separate band of material may be sewn on or worn separately attached by buttons or studs.

1.2 Sleeve pattern

Sleeve is that part of a garment which covers the arm, or through which the arm passes or slips. The pattern of the sleeve is one of the characteristics of fashion in dress, varying in every country and period.

1.3 Collar pattern

In clothing, a collar is the part of a shirt, dress, coat or blouse that fastens around the neck. Among clothing construction professionals, a collar is differentiated from other necklines such as revers and lapels, by being made from a separate piece of fabric, rather than a folded or cut part of the same piece of fabric used for the main body of the garment. A collar may be permanently attached to the main body of the garment (e.g. by stitching) or detachable.

1.4 Pocket pattern

A pocket is a bag- or envelope-like receptacle either fastened to or inserted in an article of clothing to hold small items. Pockets may also be attached to luggage, backpacks, and similar items. In older usage, a pocket was a separate small bag or pouch.

1.5 Complete set of skirt pattern

A leather skirt is a skirt made of leather. Although durable material, the particular combination of style and material makes for a certain fashion statement. Leather skirts appear in a variety of lengths and styles.

1.6 Complete set of jacket pattern

A leather jacket is a type of clothing a jacket-length coat. Usually worn on top of other apparel, and made from the tanned hide of various animals. The leather material is typically dyed black, or various shades of brown, but a wide range of colors is possible. Leather jackets can be designed for many purposes, like motorcyclists, military aviators, police, and music subcultures, which have worn the garment for protective or fashionable reasons, and occasionally to create a potentially intimidating appearance.

1.7 Complete set of trouser pattern

Trousers are an item of clothing worn from the waist to the ankles, covering both legs separately rather than with cloth stretching across both as in skirts and dresses.

| | |
|---------------------|---------------------|
| Self-Check 1 | Written Test |
|---------------------|---------------------|

| | |
|-----------------------------|---------------------------------------------------|
| TTLM: IND LGP2 TTLM 0919 V1 | TVET Program: Leather Garment Production Level II |
| Revision: 0 | Author: FTVETA |

Name: _____ Date: _____

Time started: _____ Time finished: _____

Directions: Answer all the questions listed below. Use the Answer sheet provided in the next page

- 1- List tools that used to tracing patterns? (5pts)
- 2- How to trace constructions from paper to cardboard? (5pts)

| | |
|-----------------------------|---------------------------------------------------|
| TTLM: IND LGP2 TTLM 0919 V1 | TVET Program: Leather Garment Production Level II |
| Revision: 0 | Author: FTVETA |

Note: Satisfactory rating - 10 points

Unsatisfactory - below 10 points

You can ask your teacher for the copy of the correct answers

Answer Sheet

| |
|---------------|
| Score = _____ |
| Rating: _____ |

Name: _____

Date: _____

Short Answer Questions

1. _____

2. _____

| | |
|-----------------------------|---------------------------------------------------|
| TTLM: IND LGP2 TTLM 0919 V1 | TVET Program: Leather Garment Production Level II |
| Revision: 0 | Author: FTVETA |

| | |
|----------------------------|--------------------------------------------------|
| Information Sheet-2 | Cutting the traced pattern on a cardboard |
|----------------------------|--------------------------------------------------|

The pattern maker must give in each pattern the following details, which would help: In the process of pattern making, pattern maker is considered to be a very important person next to the designer. A good pattern maker must be aware of different types of finished leathers and their suitability in making different types of leather garment. He must be well versed with the techniques of fabrication and types of constructions. He must have the essential knowledge in elementary mathematics, measurements and

| | |
|-----------------------------|---------------------------------------------------|
| TTLM: IND LGP2 TTLM 0919 V1 | TVET Program: Leather Garment Production Level II |
| Revision: 0 | Author: FTVETA |



use of geometrical instruments for drawing geometrical shapes viz. square, rectangle, circle, etc. and other odd shapes. He must be aware of different types of fittings, linings, reinforcements and other miscellaneous items, which are used in leather garment making. The pattern maker must give in each pattern the following details, which would help the cutter in the subsequent process of cutting to cut components easily and swiftly.

To make less number of products, cardboard patterns are used for cutting components. To make more number of products, aluminum or galvanized metal patterns are used for cutting components.

Good Craftsman/ Sample man has to keep in his mind --

1. A good pattern of the right size which has been adjusted to suit your individual requirements will enable you to obtain a perfect product.

2. A pattern prepared on thick paper or card board can be preserved for a long time and can be used over and over again.
3. By manipulating the basic pattern pieces it is possible to produce patterns for Complicated and original designs.
4. A paper pattern of a particular size can be used to make new patterns of proportionately larger or smaller sizes by following a systematic procedure called "grading".
5. Cutting with the help of a paper pattern is quicker and easier than on the leather, fabric and other materials.
6. Use of a paper pattern will enable you to cut the jacket pattern with a minimum amount of material because it is possible for you to try out the placement of pattern pieces in different ways till you have found the most economical way to keep them.

| | |
|----------------------------|--------------------------------------------------------------|
| Information Sheet-3 | Copying reference and specification on to the pattern |
|----------------------------|--------------------------------------------------------------|

Instructions to be marked on patterns

- The name of the style/product number
- Pattern size
- The name of each piece
- Center back/center front
- Fold lines
- Balance marks (matching points marked by notch)
- Grain lines (marked by arrow lines)
- Construction marks
 - These includes
 - Darts
 - Button holes
 - Pocket placing
 - Pleats
- Seam allowances
- Number of pieces to be cut (x1, x2, x4)

| | |
|-----------------------------|---------------------------------------------------|
| TTLM: IND LGP2 TTLM 0919 V1 | TVET Program: Leather Garment Production Level II |
| Revision: 0 | Author: FTVETA |

| | |
|---------------------|---------------------|
| Self-Check 3 | Written Test |
|---------------------|---------------------|

Name: _____ Date: _____

Time started: _____ Time finished: _____

Directions: Answer all the questions listed below. Use the Answer sheet provided in the next page:

- 1) Write name of numeric and Alfa numeric sizes?
- 2) What is the purpose of writing instructions on the pattern?

| | |
|-----------------------------|---------------------------------------------------|
| TTLM: IND LGP2 TTLM 0919 V1 | TVET Program: Leather Garment Production Level II |
| Revision: 0 | Author: FTVETA |

Note: Satisfactory rating - 10 points

Unsatisfactory - below 10 points

You can ask your teacher for the copy of the correct answers

Answer Sheet

Score = _____

Rating: _____

| | |
|-----------------------------|---------------------------------------------------|
| TTLM: IND LGP2 TTLM 0919 V1 | TVET Program: Leather Garment Production Level II |
| Revision: 0 | Author: FTVETA |

Name: _____

Date: _____

Short Answer Questions

1 _____

2 _____

| | |
|--------------------------|---------------------------------------------------------------|
| Operation Sheet 1 | Procedures how to trace patterns on a given card board |
|--------------------------|---------------------------------------------------------------|

How to trace patterns on a given card board

Step 1: put the construction paper on card board then put the weight above on it.

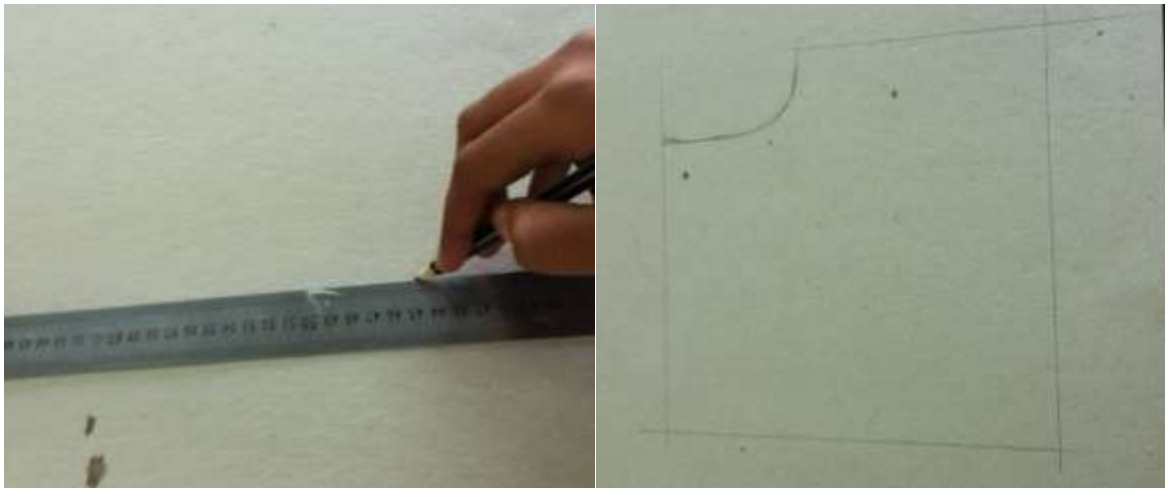


Step 2: by using tracing wheel trace those patterns on to card board

| | |
|-----------------------------|---------------------------------------------------|
| TTLM: IND LGP2 TTLM 0919 V1 | TVET Program: Leather Garment Production Level II |
| Revision: 0 | Author: FTVETA |

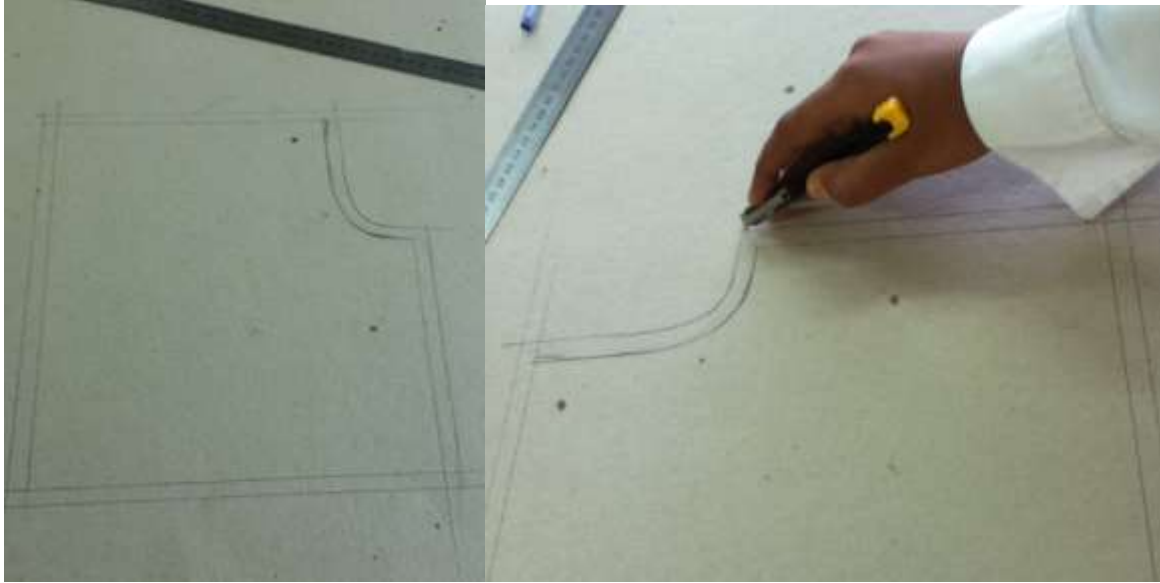


Step 3: draw those lines on card board by using ruler and French curve.

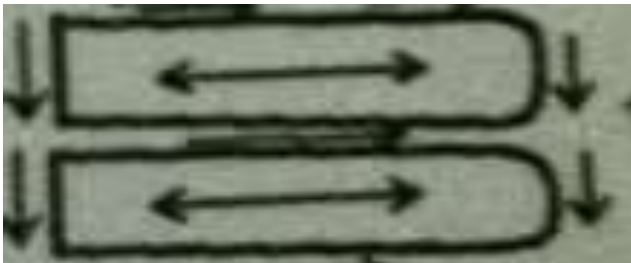


Step 4: give 1cm allowance around and cut it by using cutting knife.

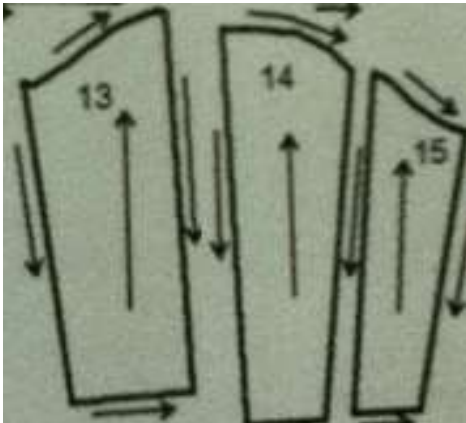
0



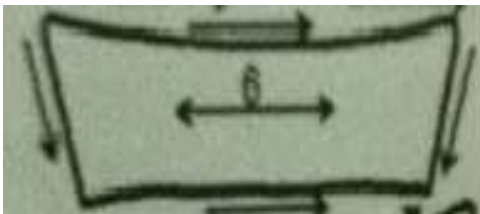
i. Cuff pattern



ii. Sleeve pattern

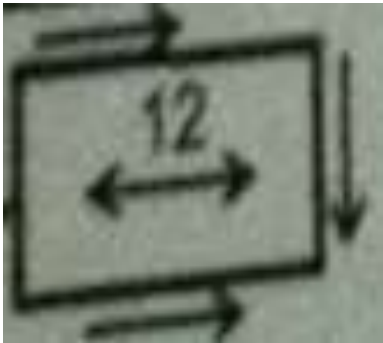


iii. Collar pattern

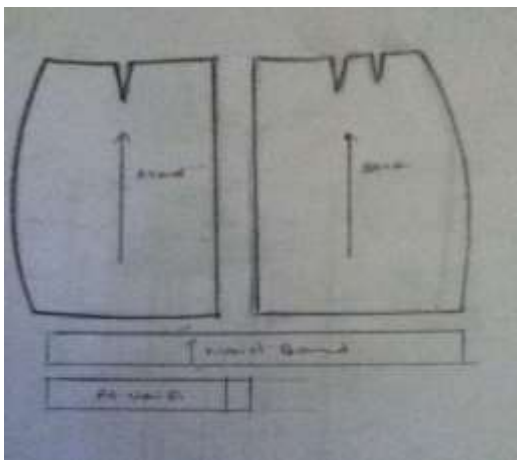


iv. Pocket pattern

| | |
|-----------------------------|---------------------------------------------------|
| TTLM: IND LGP2 TTLM 0919 V1 | TVET Program: Leather Garment Production Level II |
| Revision: 0 | Author: FTVETA |



v. Complete set of skirt pattern



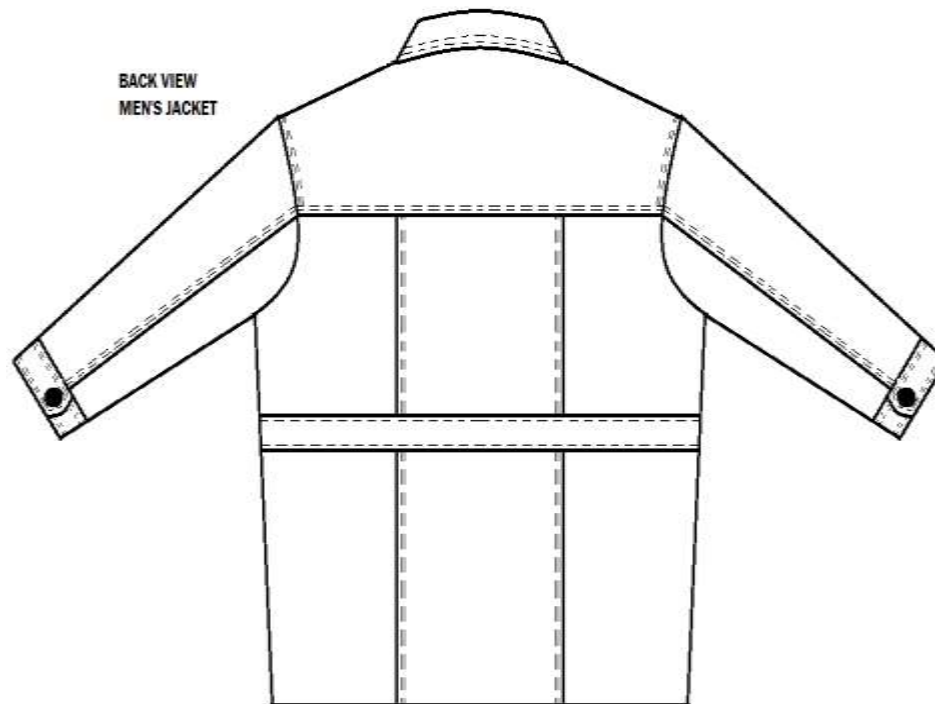
| | |
|--------------------------|---------------------------------------------------------|
| Operation Sheet 2 | Procedures on how to cut patterns on a given card board |
|--------------------------|---------------------------------------------------------|

Cut the jacket components on leather economically as below

- 1- Sharpen the knife
- 2- Press the pattern with left hand fingers
- 3- Start cutting from left hand side to right hand side direction
- 4- Pattern cutting direction is shown in the fig
- 5- The left hand fingers should move along the knife direction
- 6- Notches are to be cut properly
- 7- No. of pieces to be cut

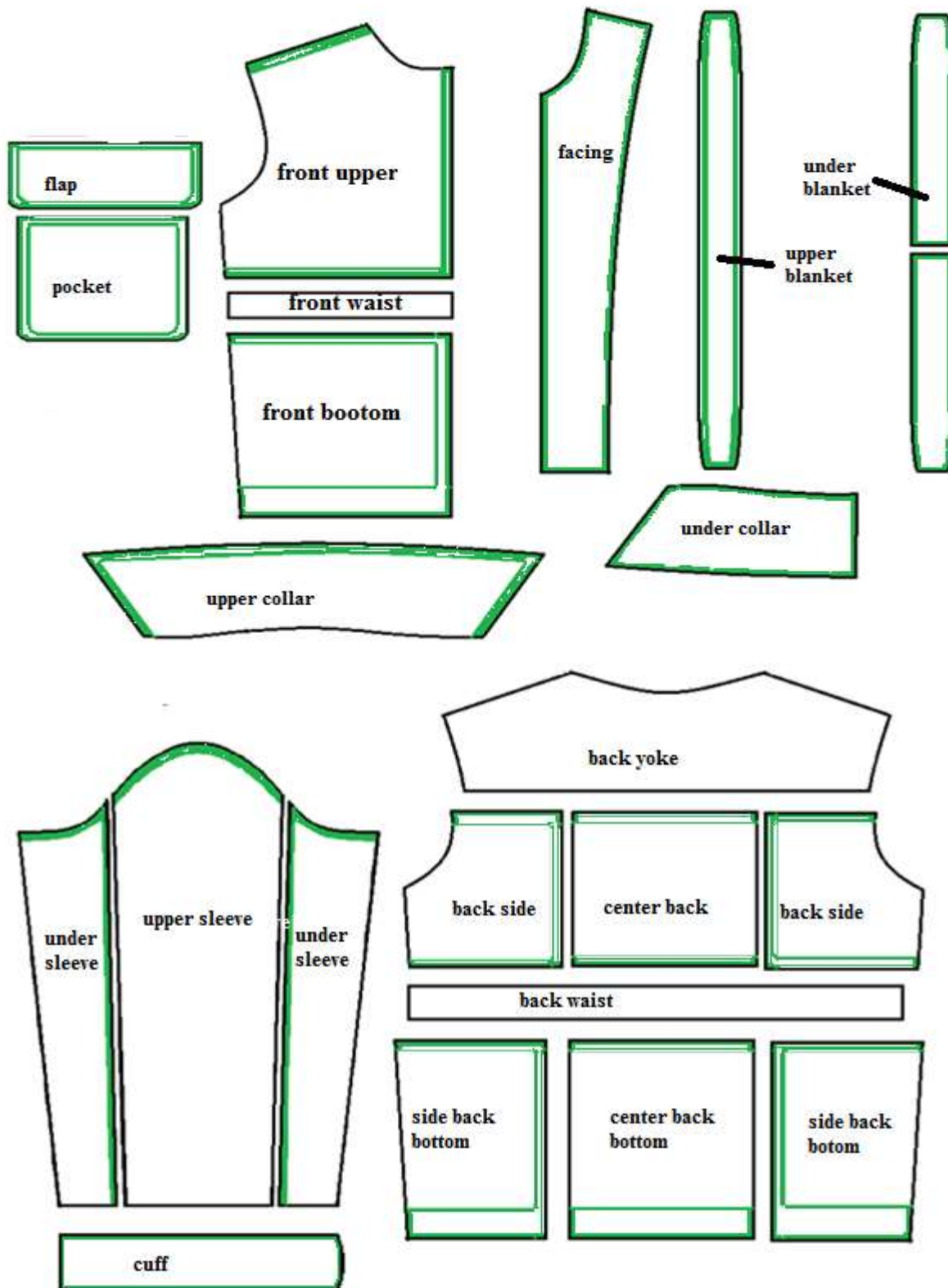
Complete set of Jacket pattern

Men's Jacket

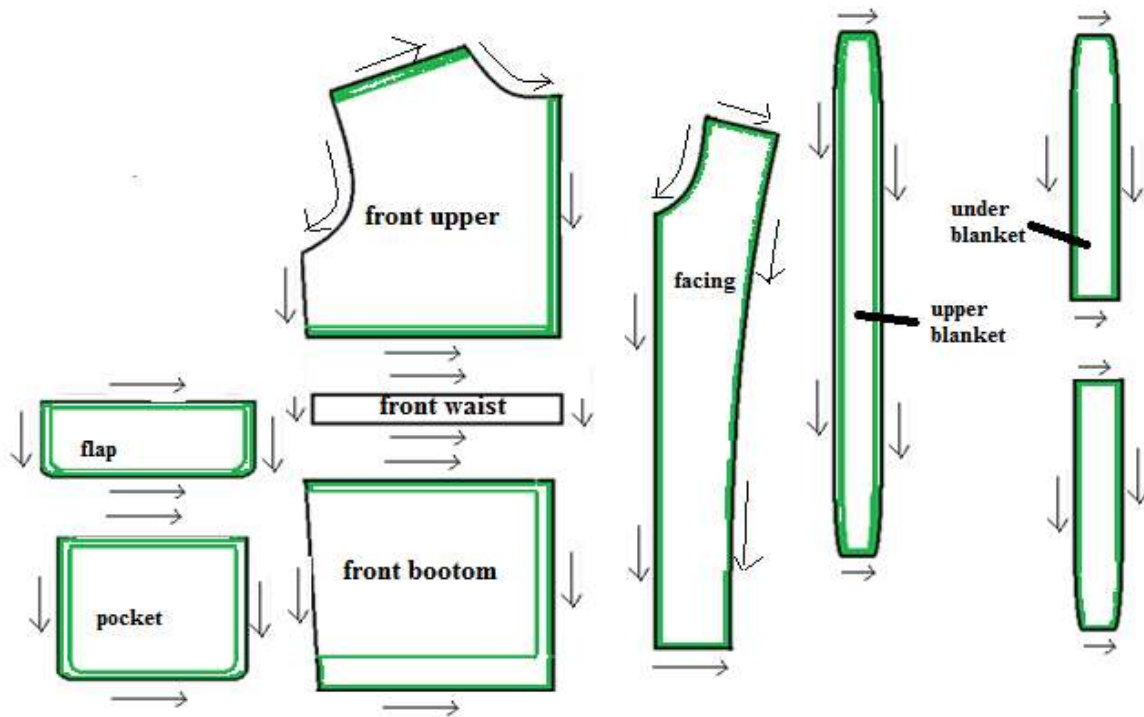


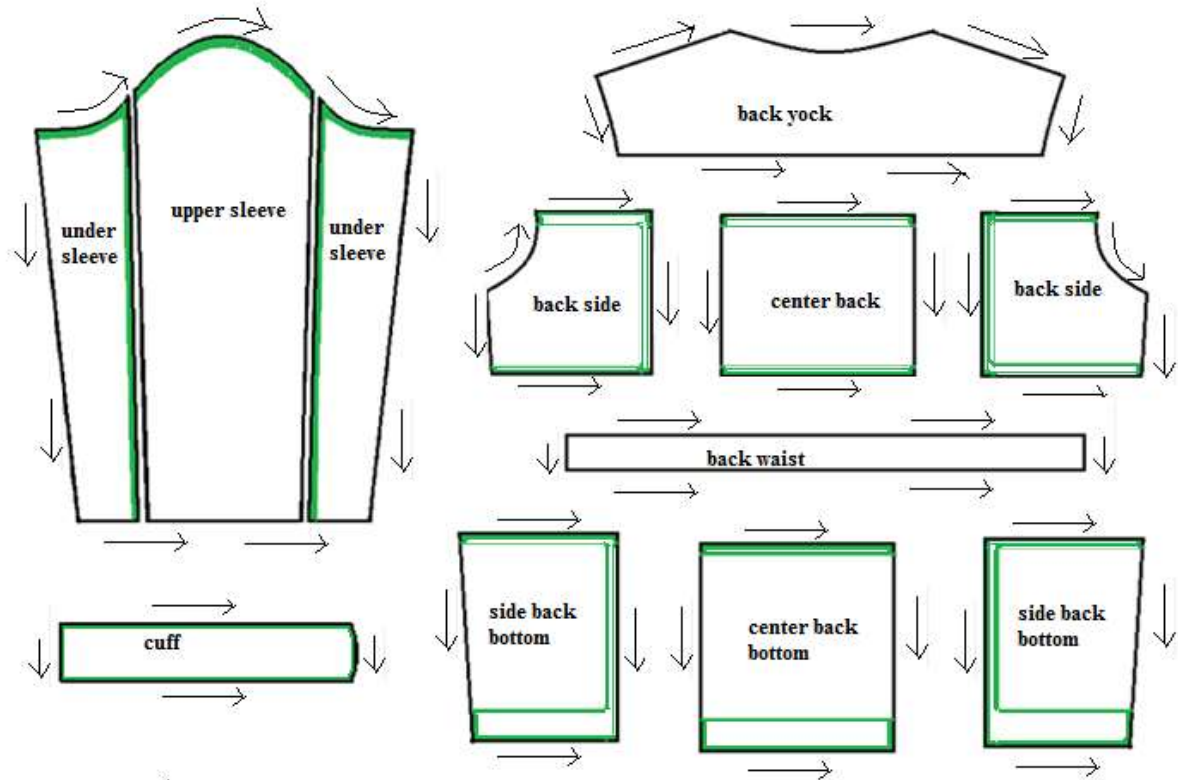
Parts of men's jacket

| | |
|-----------------------------|---------------------------------------------------|
| TTLM: IND LGP2 TTLM 0919 V1 | TVET Program: Leather Garment Production Level II |
| Revision: 0 | Author: FTVETA |



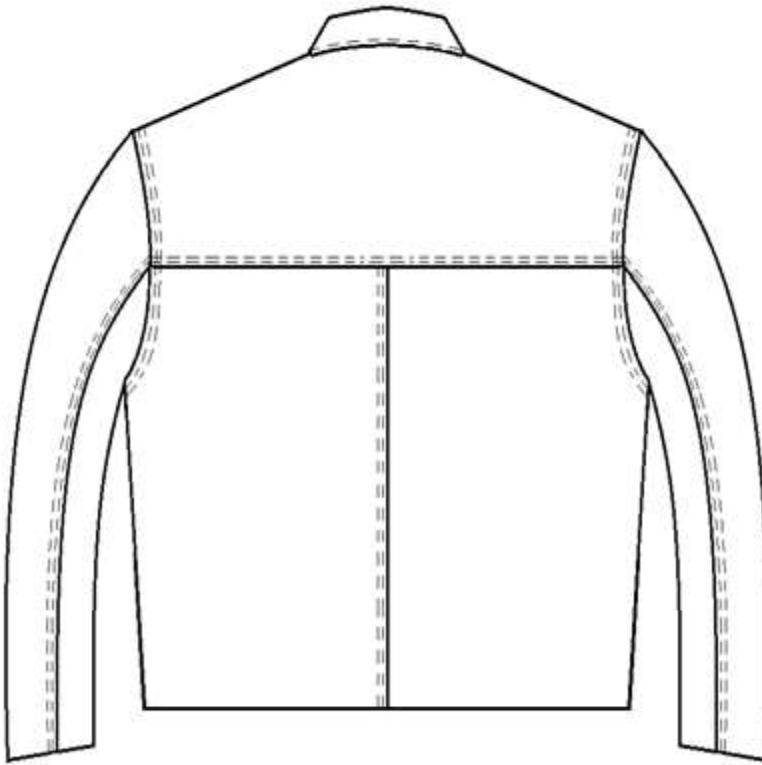
Directions on how to cut mens jacket



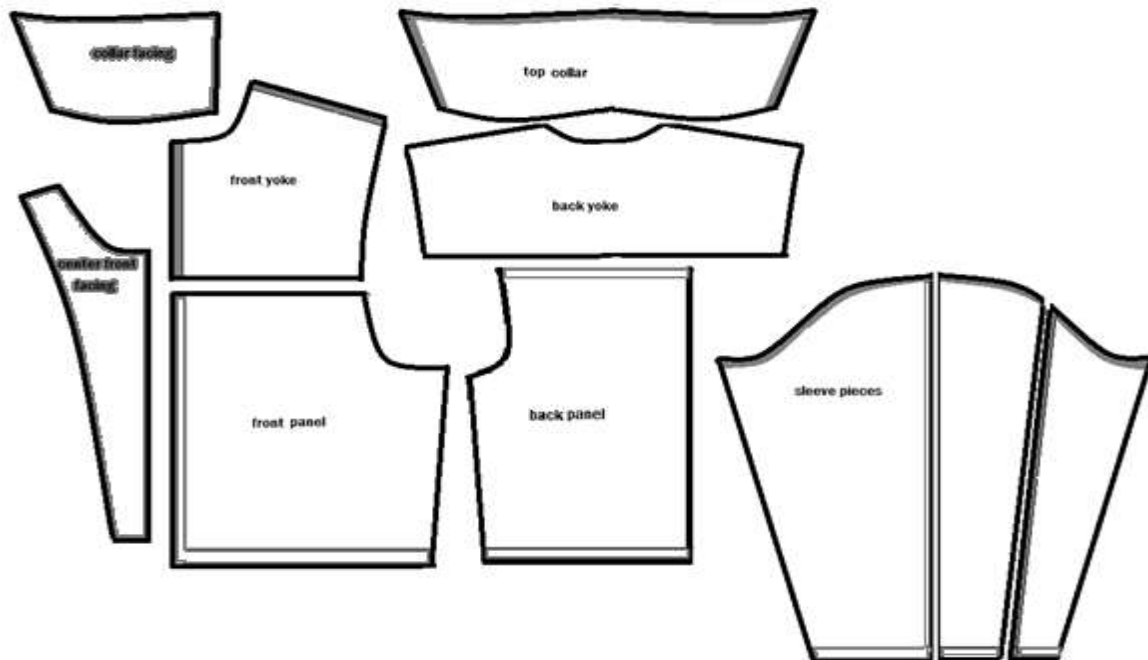


Men's Normal Jacket

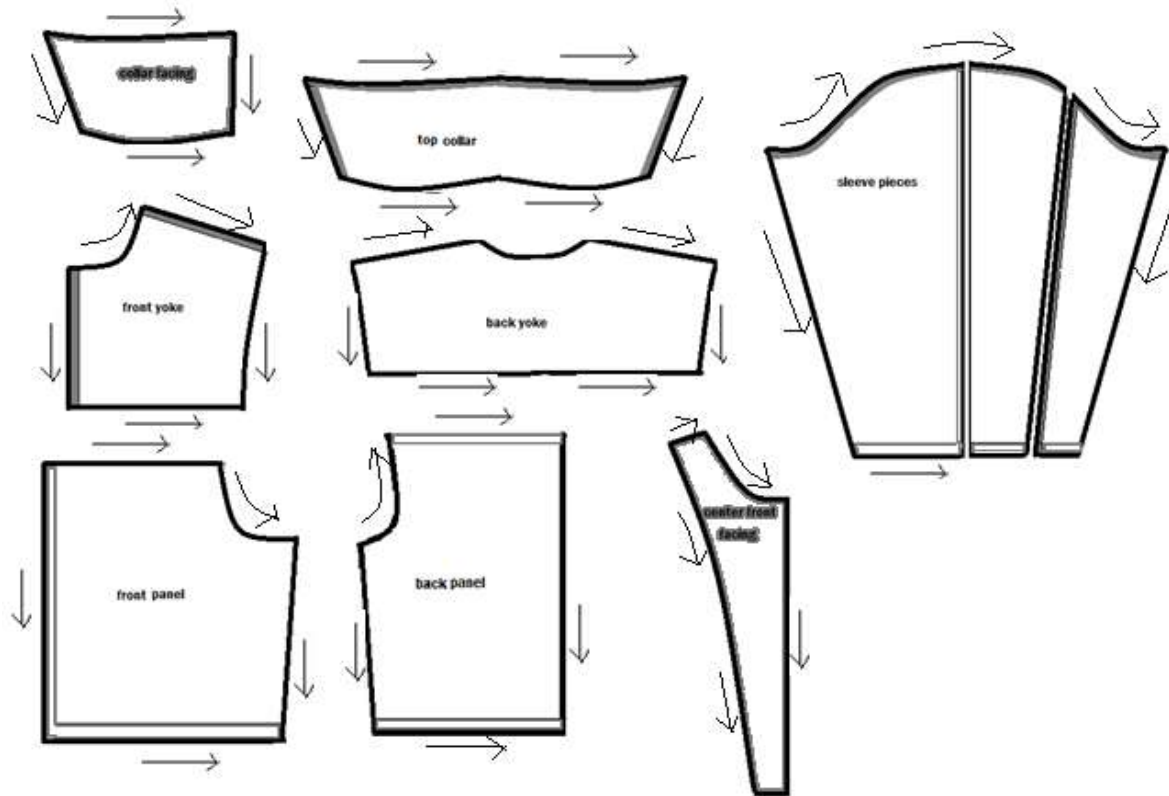




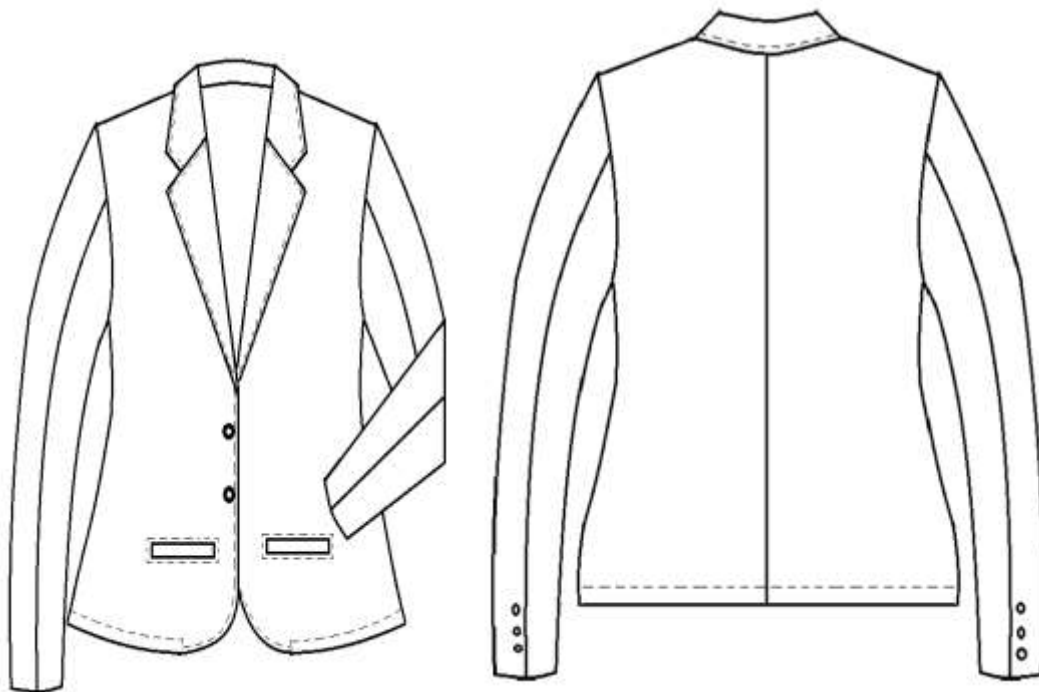
Parts of men's normal jacket



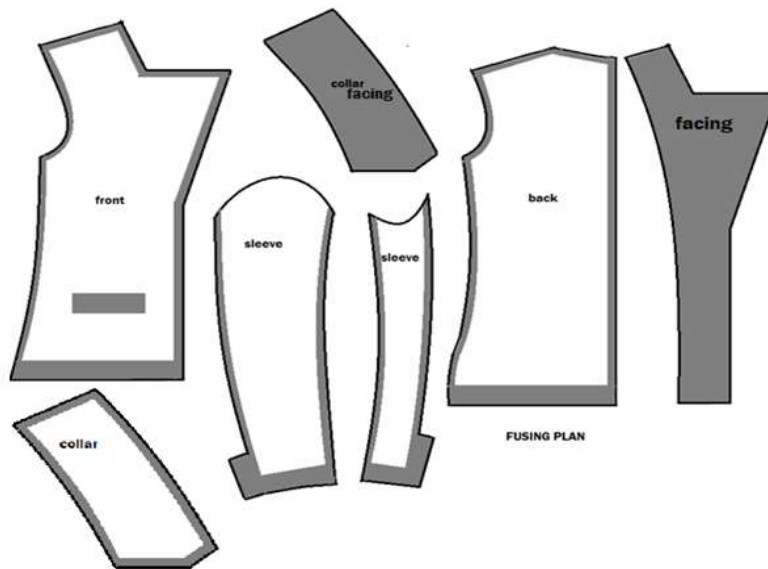
Directions on how to cut mens normal jacket



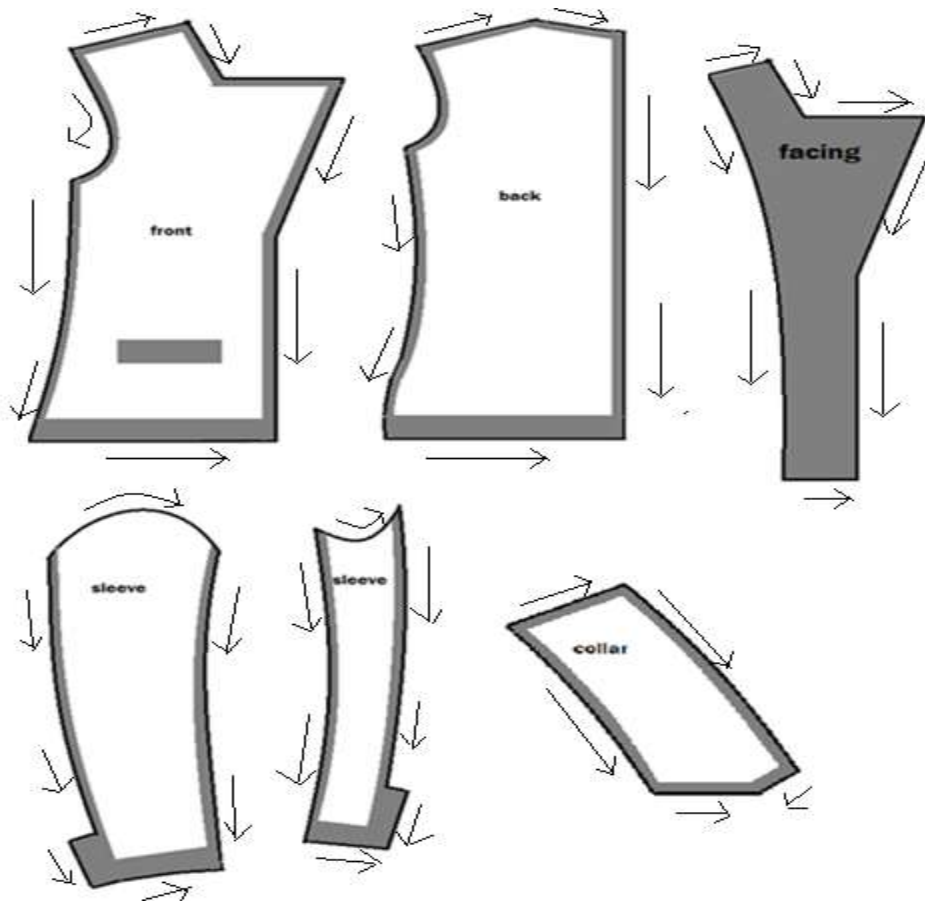
Ladies Tailored Jacket



Parts of ladies Tailored Jacket

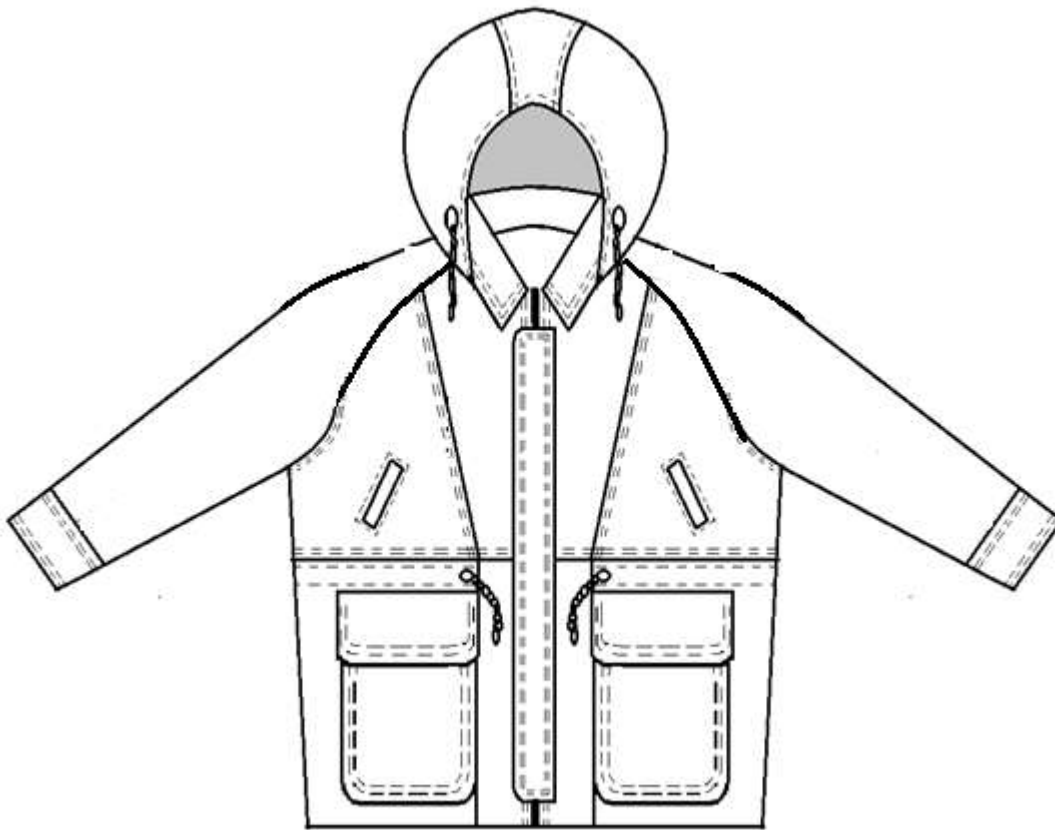


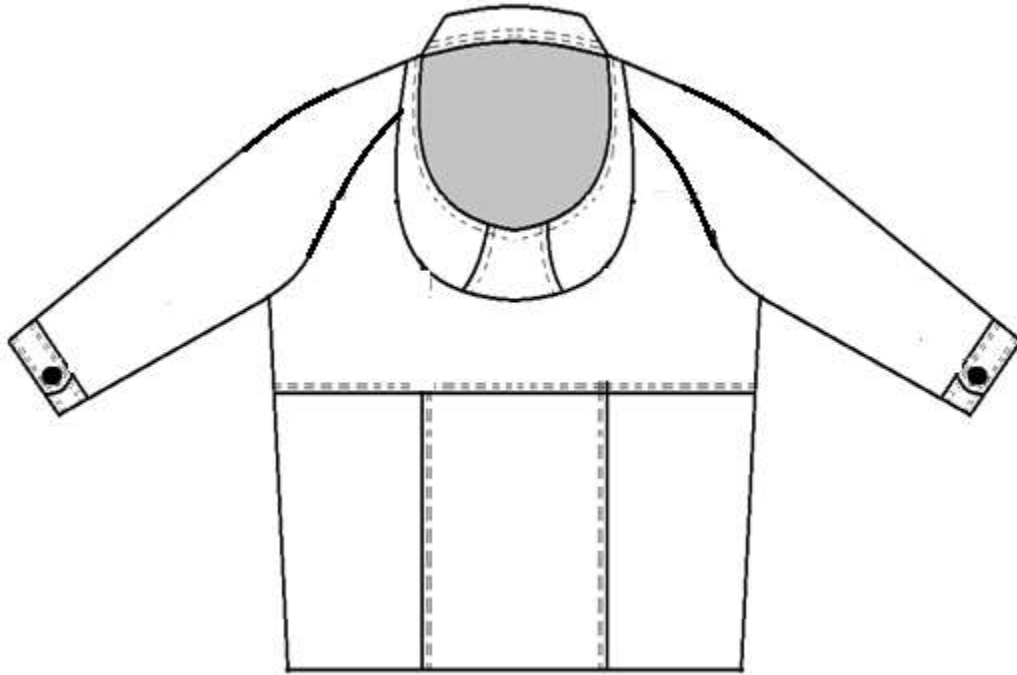
Directions on how to cut the pattern



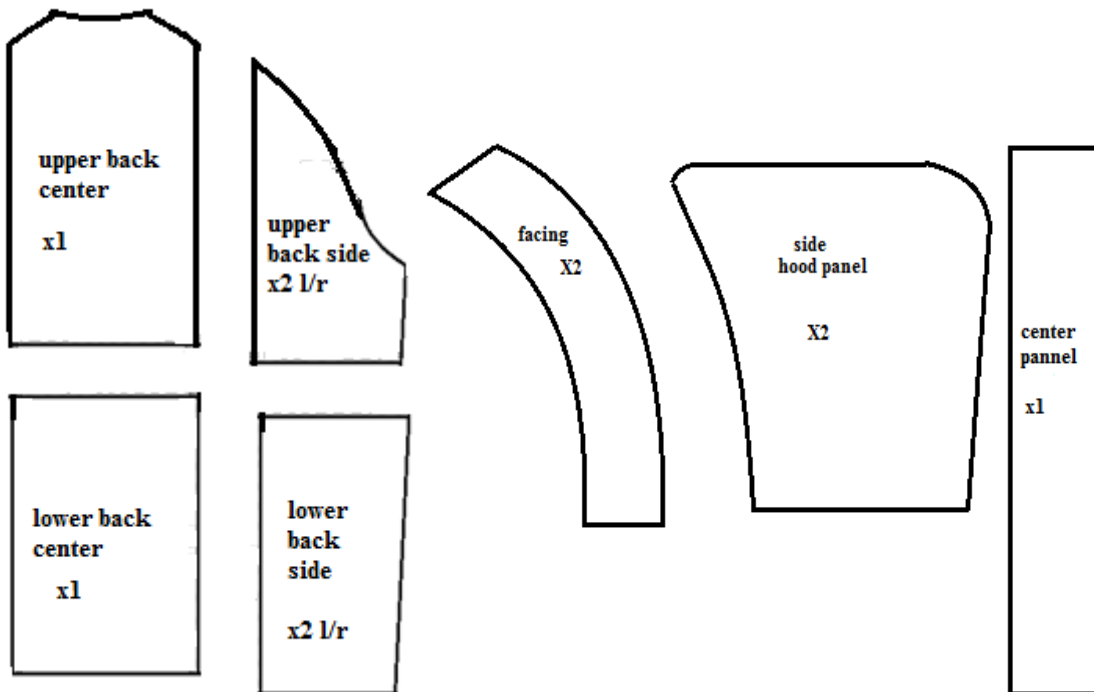
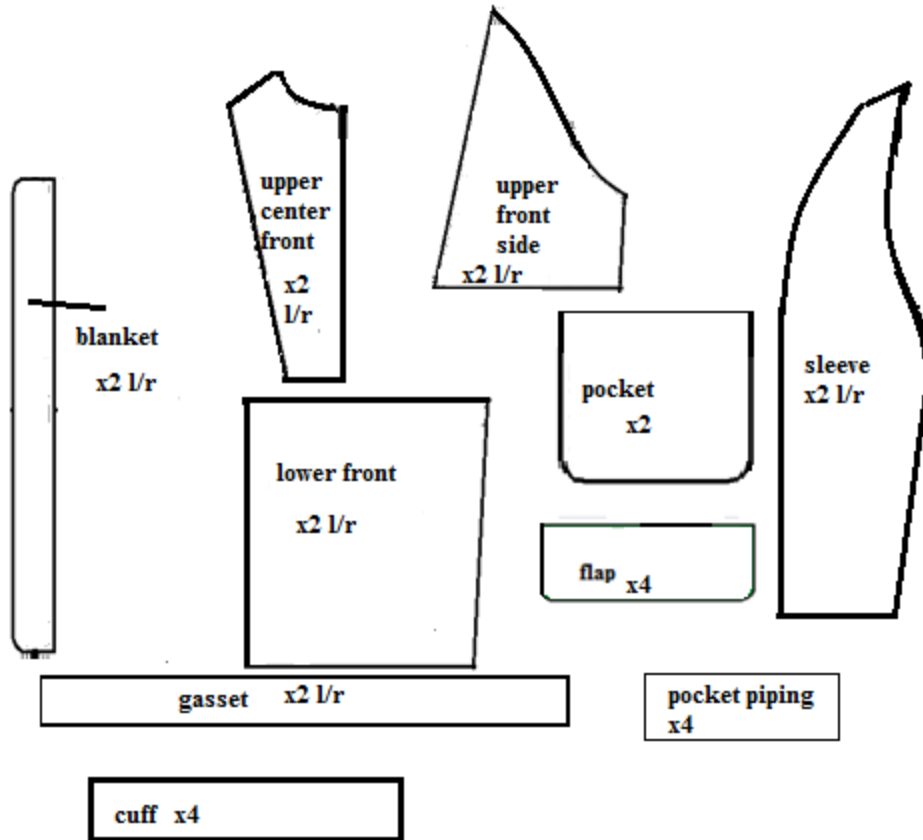
| | |
|-----------------------------|---------------------------------------------------|
| TTLM: IND LGP2 TTLM 0919 V1 | TVET Program: Leather Garment Production Level II |
| Revision: 0 | Author: FTVETA |

Men's raglan Jacket with hood

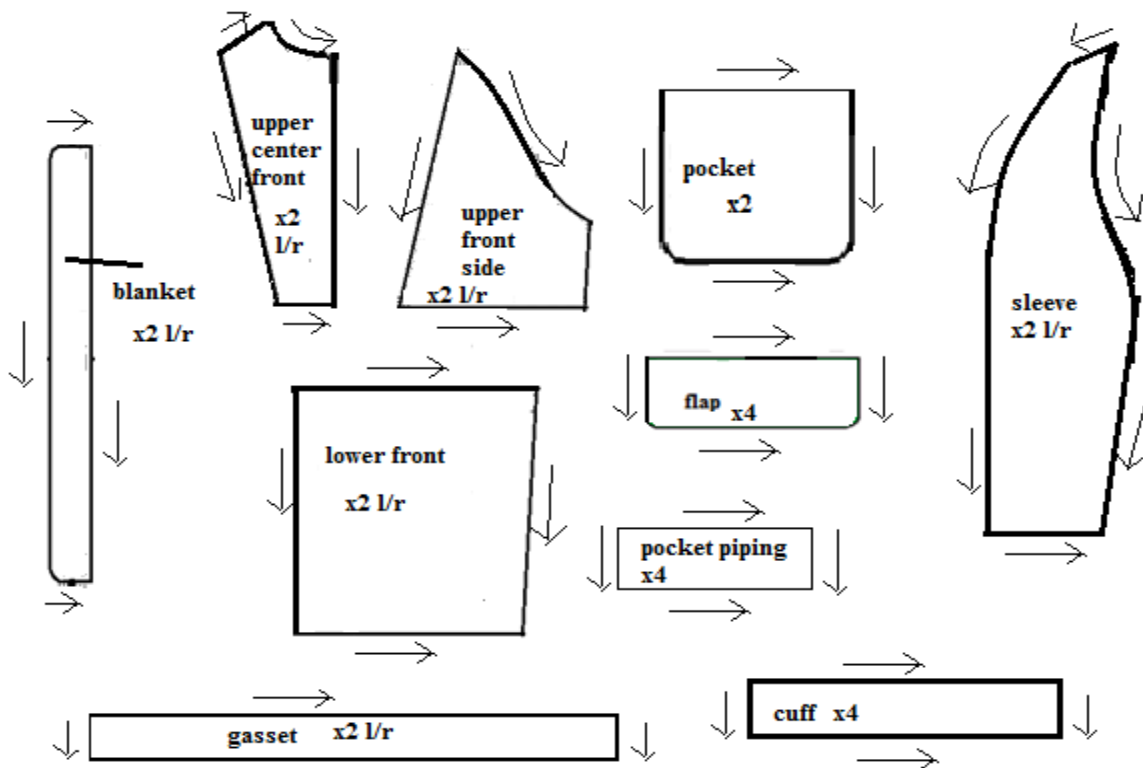


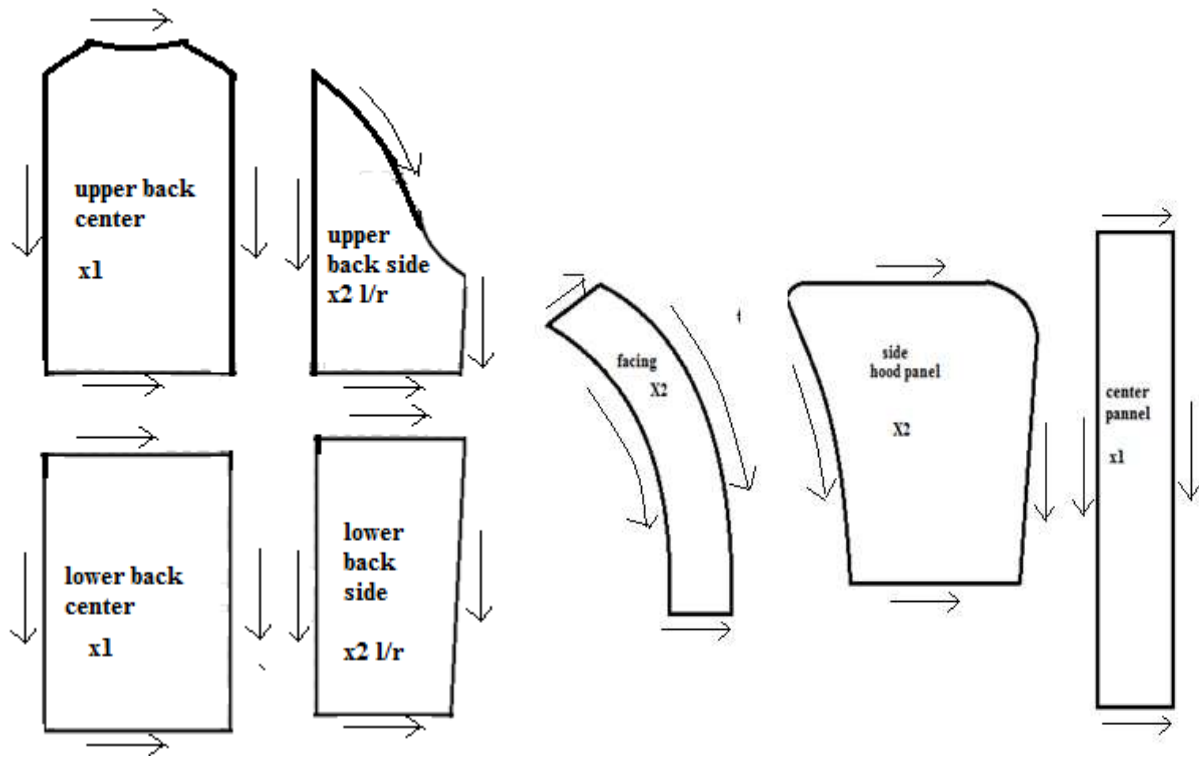


Parts of men's raglan jacket with hood



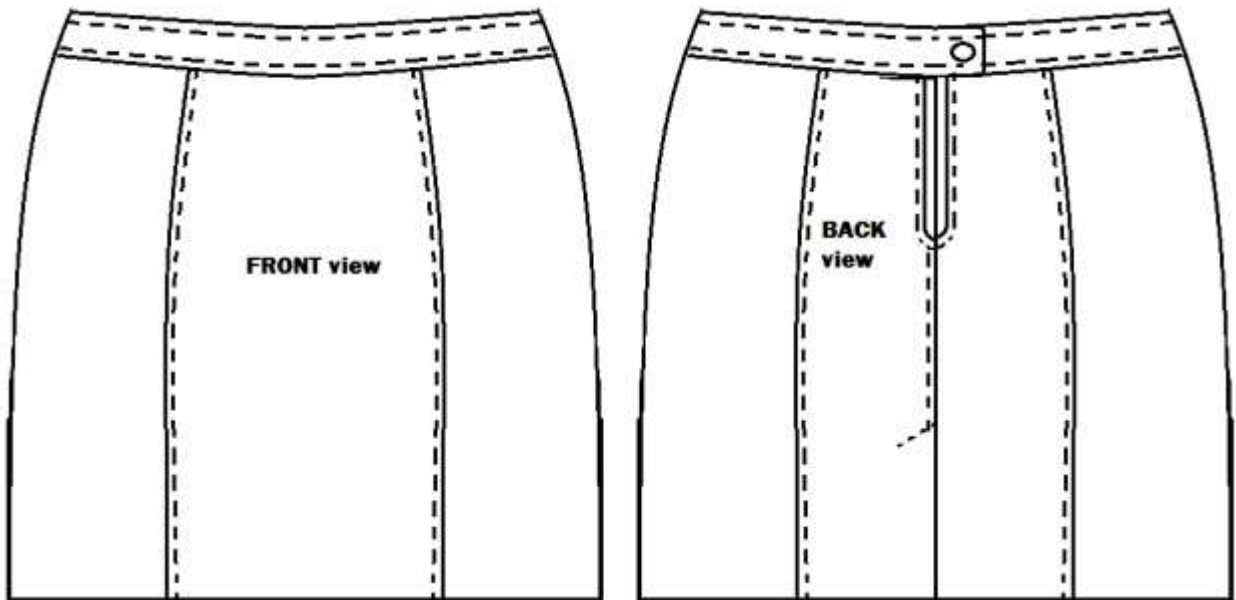
Directions on how to cut the pattern



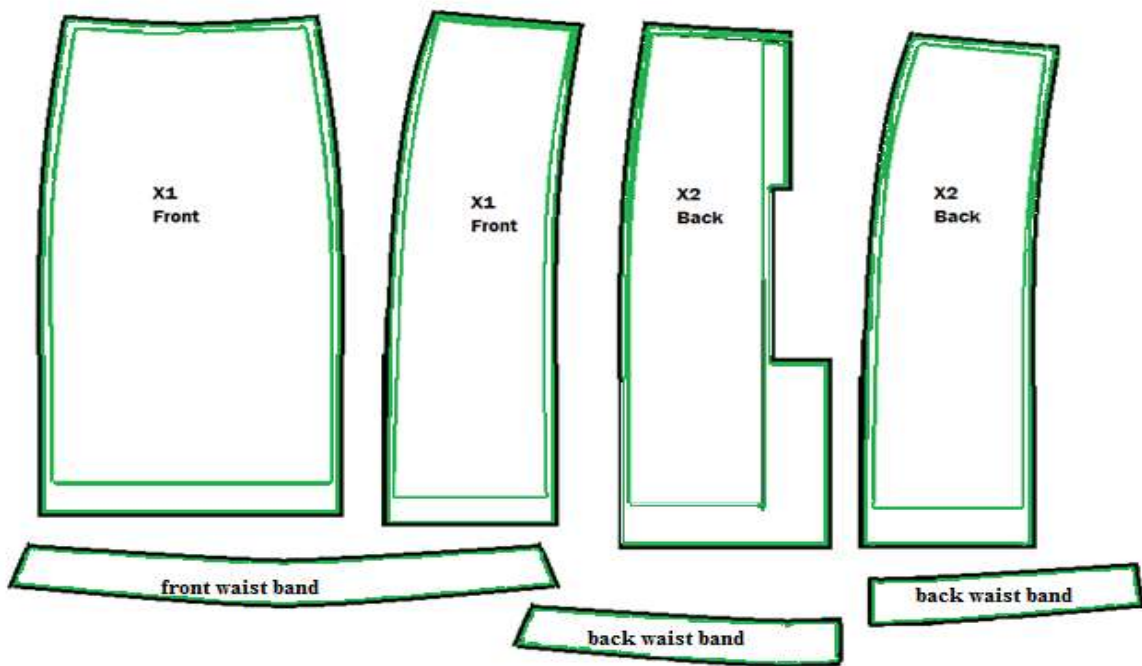


Complete set of skirt pattern

Short Skirt

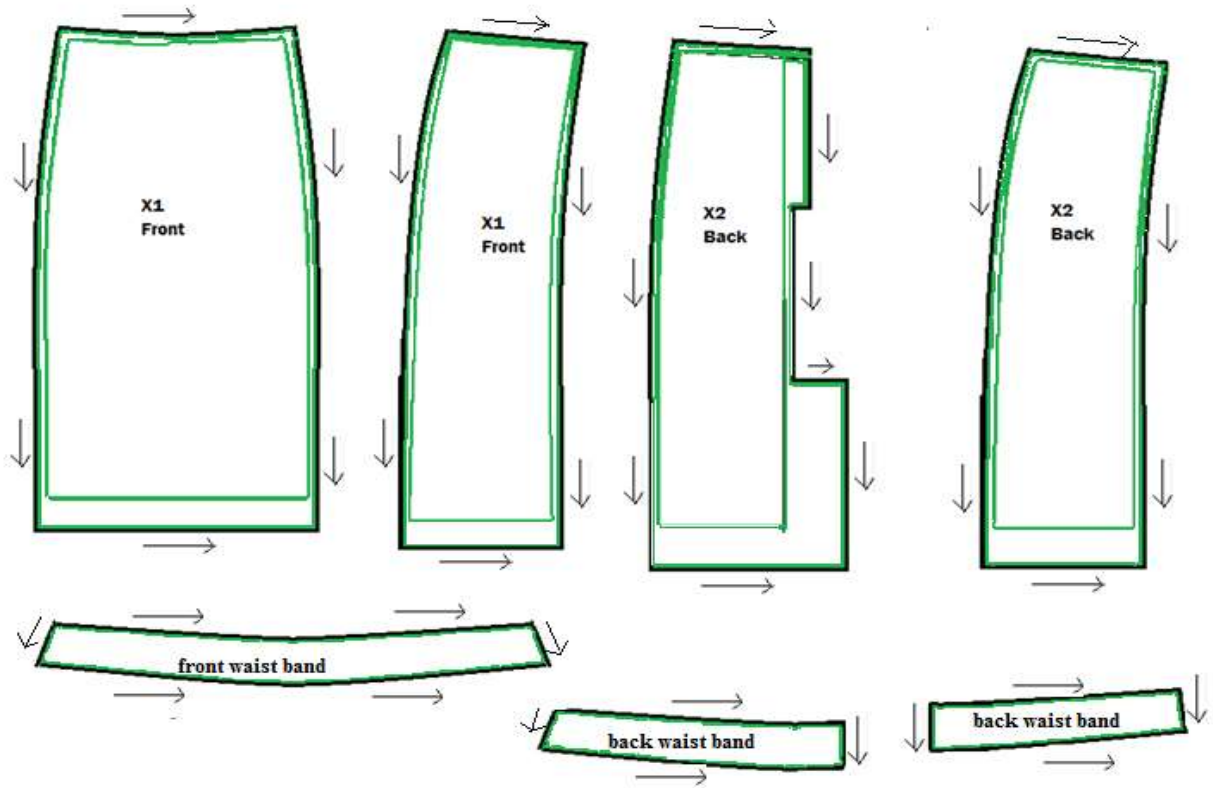


Parts of short skirt

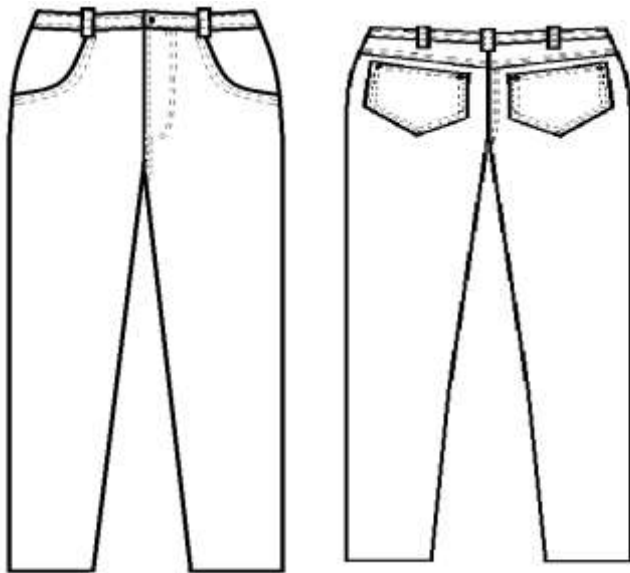


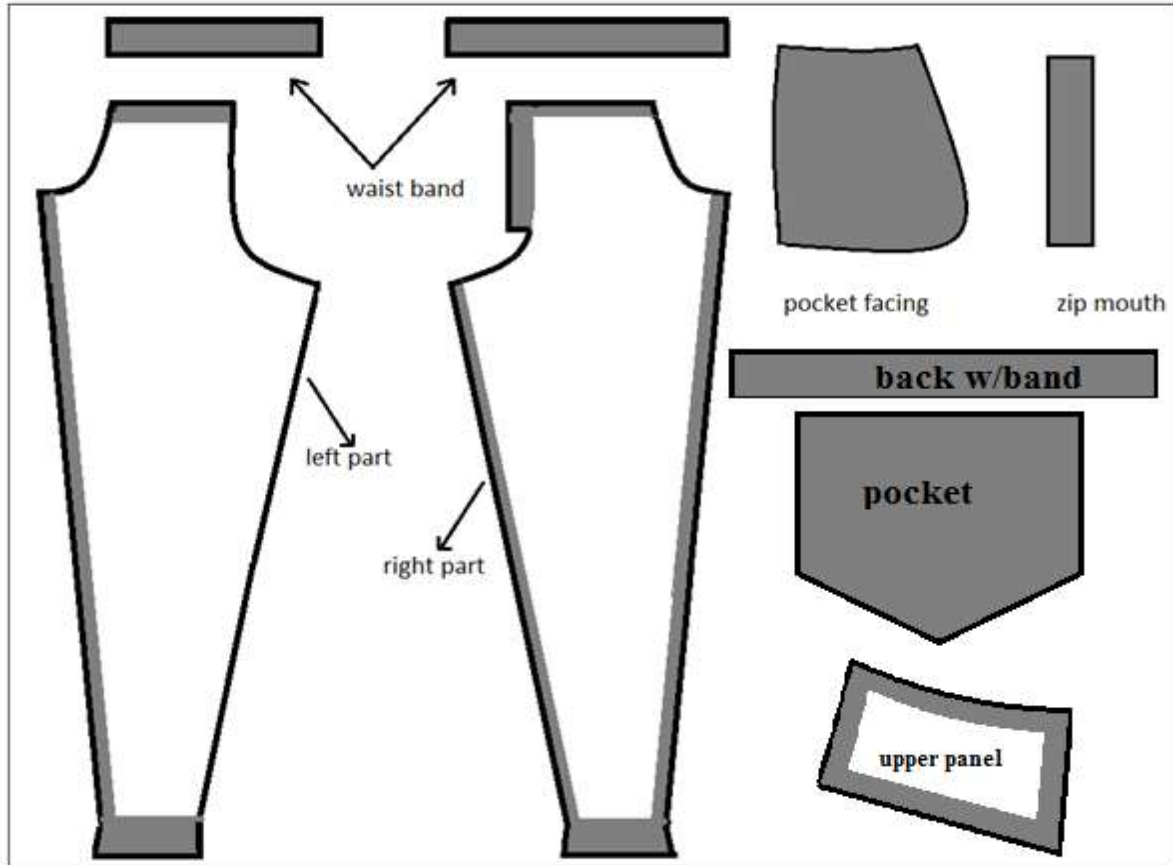
Directions on how to cut skirt

| | |
|-----------------------------|---------------------------------------------------|
| TTLM: IND LGP2 TTLM 0919 V1 | TVET Program: Leather Garment Production Level II |
| Revision: 0 | Author: FTVETA |

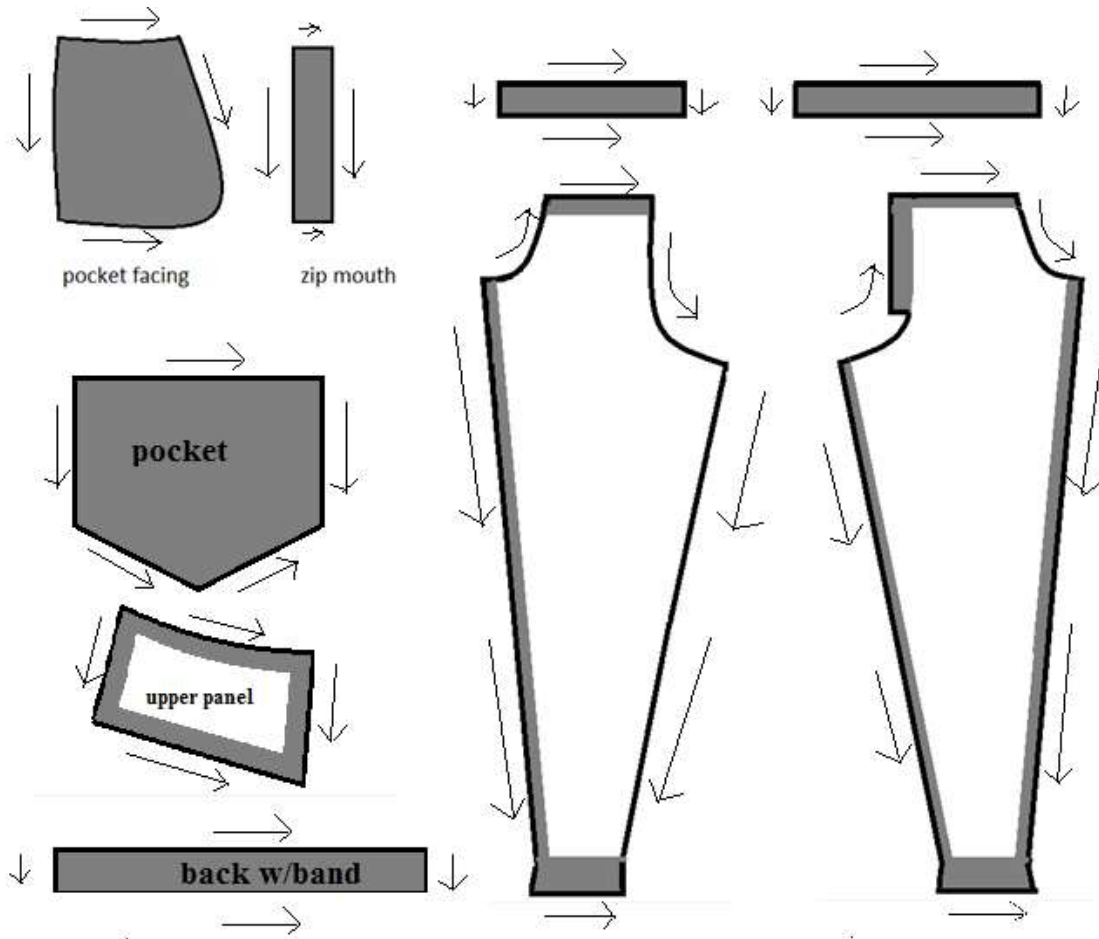


Complete set of Trouser pattern





Directions on how to cut the pattern



| | |
|--------------------------|--------------------------------------------------------------|
| Operation Sheet 3 | Copying reference and specification on to the pattern |
|--------------------------|--------------------------------------------------------------|

After cutting the pattern write those specifications (mentioned on work sheet) on it.





| | |
|-----------------|--------------------------------|
| LAP Test | Practical Demonstration |
|-----------------|--------------------------------|

Name: _____ Date: _____

Time started: _____ Time finished: _____

Instructions: based on the demonstration that you have seen

Task 1: perform ladies jacket cutting operation?

| | |
|-----------------------------|---------------------------------------------------|
| TTLM: IND LGP2 TTLM 0919 V1 | TVET Program: Leather Garment Production Level II |
| Revision: 0 | Author: FTVETA |

Task 2: Copying necessary references and specification to the pattern

REFERNCES

<https://www.marthastewart.com/275090/sewing-patterns-and-templates>

| | |
|-----------------------------|---------------------------------------------------|
| TTLM: IND LGP2 TTLM 0919 V1 | TVET Program: Leather Garment Production Level II |
| Revision: 0 | Author: FTVETA |